

## Product Datasheet

# Goat anti-Rabbit IgG Heavy and Light Chain Highly Cross-Adsorbed Antibody HRP Conjugated (orb1531012)

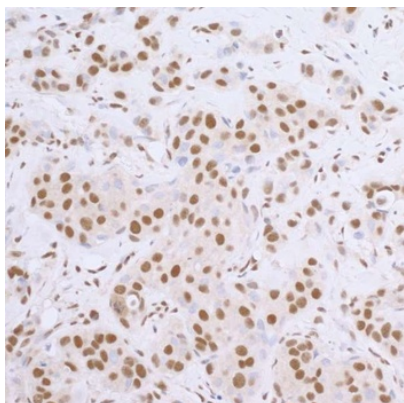
<b>Description</b>	Rabbit IgG-Heavy and Light Chain Antibody
<b>Species/Host</b>	Goat
<b>Reactivity</b>	Rabbit
<b>Conjugation</b>	HRP
<b>Tested Applications</b>	ICC, IHC
<b>Target</b>	Rabbit IgG-Heavy and Light Chain
<b>Preservatives</b>	Phosphate Buffered Saline (PBS) containing 0.2% rAlbumin and 0.05% Pro-Clean 400
<b>Form/Appearance</b>	Whole IgG
<b>Concentration</b>	1 mg/ml
<b>Storage</b>	2 - 8°C
<b>Note</b>	For research use only
<b>Application notes</b>	Format: Whole IgG
<b>Clonality</b>	Polyclonal
<b>Dilution Range</b>	IHC - 1:50 - 1:500; ICC - 1:50 - 1:500
<b>Expiration Date</b>	12 months from date of receipt.

**Biorbyt Ltd.**

7 Signet Court, Swann's Road,  
Cambridge, CB5 8LA, United Kingdom  
Email: [info@biorbyt.com](mailto:info@biorbyt.com), [support@biorbyt.com](mailto:support@biorbyt.com)  
Phone: [+44 \(0\) 1223 859-353](tel:+44(0)1223859353) | Fax: [+1 \(415\) 651-8558](tel:+1(415)6518558)

**Biorbyt LLC.**

68 TW Alexander Drive,  
Durham, NC, 27713, United States  
Email: [info@biorbyt.com](mailto:info@biorbyt.com), [support@biorbyt.com](mailto:support@biorbyt.com)  
Phone: [+1 \(415\) 906-5211](tel:+1(415)9065211) | Fax: [+1 \(415\) 651-8558](tel:+1(415)6518558)



Detection of human SP1 by immunoperoxidase. Sample: FFPE section of human breast carcinoma. Primary Antibody: Rabbit anti-SP1 used at a dilution of 1:100 (10µg/ml).

---

**Biorbyt Ltd.**

7 Signet Court, Swann's Road,  
Cambridge, CB5 8LA, United Kingdom  
Email: [info@biorbyt.com](mailto:info@biorbyt.com), [support@biorbyt.com](mailto:support@biorbyt.com)  
Phone: [+44 \(0\) 1223 859-353](tel:+44(0)1223859353) | Fax: [+1 \(415\) 651-8558](tel:+1(415)6518558)

**Biorbyt LLC.**

68 TW Alexander Drive,  
Durham, NC, 27713, United States  
Email: [info@biorbyt.com](mailto:info@biorbyt.com), [support@biorbyt.com](mailto:support@biorbyt.com)  
Phone: [+1 \(415\) 906-5211](tel:+1(415)9065211) | Fax: [+1 \(415\) 651-8558](tel:+1(415)6518558)