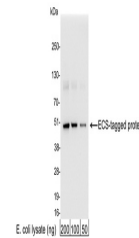


Product Datasheet

ECS (DYKDDDDK) Tag Antibody (orb1530882)

Description	ECS (DYKDDDDK) Tag Antibody
Species/Host	Rabbit
Conjugation	Unconjugated
Tested Applications	ELISA, ICC, IP, WB
Target	ECS (DYKDDDDK) Tag
Preservatives	Phosphate Buffered Saline (PBS) containing 0.09% Sodium Azide
Form/Appearance	Whole IgG
Concentration	1 mg/ml
Storage	2 - 8°C
Note	For research use only
Application notes	Format: Whole IgG
Clonality	Polyclonal
Dilution Range	WB - 1:1,000 - 1:30,000; IP - 1 - 4 µg/mg lysate; ICC - 1:100 - 1:400; ELISA - 1:1,000 - 1:30,000; for coating plates 1:100 - 1:500
Expiration Date	12 months from date of receipt.



Detection of ECS (DYKDDDDK)-tagged prote...