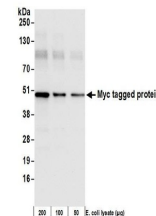


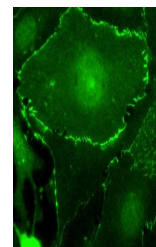
## Product Datasheet

### Myc Tag Antibody (orb1530878)

<b>Description</b>	Myc Tag Antibody
<b>Species/Host</b>	Rabbit
<b>Conjugation</b>	Unconjugated
<b>Tested Applications</b>	ELISA, ICC, IP, WB
<b>Target</b>	Myc Tag
<b>Preservatives</b>	Phosphate Buffered Saline (PBS) containing 0.09% Sodium Azide
<b>Form/Appearance</b>	Whole IgG
<b>Concentration</b>	1 mg/ml
<b>Storage</b>	2 - 8°C
<b>Note</b>	For research use only
<b>Application notes</b>	Format: Whole IgG
<b>Clonality</b>	Polyclonal
<b>Uniprot ID</b>	<b>P01106</b>
<b>Dilution Range</b>	WB - 1:1,000 - 1:30,000; IP - 1 - 4 µg/mg lysate; ICC - 1:100 - 1:400; ELISA - 1:1,000 - 1:30,000; for coating plates 1:100 - 1:500
<b>Expiration Date</b>	12 months from date of receipt.



Detection of c-myc-tagged protein by wes...



Detection of c-myc-tagged Plakoglobin by...