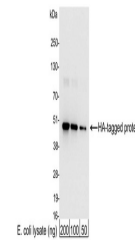


## Product Datasheet

### HA Tag Antibody (orb1530875)

<b>Description</b>	HA Tag Antibody
<b>Species/Host</b>	Rabbit
<b>Conjugation</b>	HRP
<b>Tested Applications</b>	ELISA, ICC, WB
<b>Target</b>	HA Tag
<b>Preservatives</b>	Phosphate Buffered Saline (PBS) containing 0.2% rAlbumin and 0.05% Pro-Clean 400
<b>Form/Appearance</b>	Whole IgG
<b>Concentration</b>	1 mg/ml
<b>Storage</b>	2 - 8°C
<b>Note</b>	For research use only
<b>Application notes</b>	Format: Whole IgG
<b>Clonality</b>	Polyclonal
<b>Dilution Range</b>	WB - 1:1,000 - 1:30,000; IHC - Not applicable; ICC - 1:200 - 1:500; ELISA - 1:10,000 - 1:100,000
<b>Expiration Date</b>	12 months from date of receipt.



Detection of HA-tagged protein by WB.Sam...