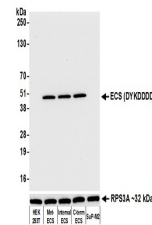


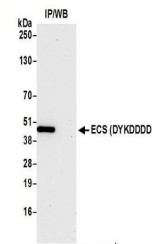
Product Datasheet

ECS (DYKDDDDK) Tag Antibody (orb1530835)

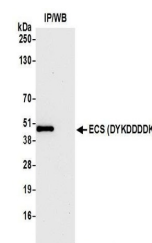
Description	ECS (DYKDDDDK) Tag Antibody
Species/Host	Rabbit
Conjugation	Unconjugated
Tested Applications	ELISA, ICC, IP, WB
Immunogen	Enterokinase Cleavage Site (DYKDDDDK)
Target	ECS (DYKDDDDK) Tag
Preservatives	Borate Buffered Saline (BBS) pH 8.2 with 0.1% rAlbumin and 0.09% Sodium Azide
Form/Appearance	Whole IgG
Concentration	100 µg/ml
Storage	2 - 8°C
Note	For research use only
Application notes	Format: Whole IgG
Clonality	Recombinant
Dilution Range	WB - 1:1000; IP - 20 µl/mg lysate; ICC - 1:1000 to 1:5000. Epitope retrieval with citrate buffer pH6.0 is recommended for FFPE cell sections.; ELISA - 1:1,000 - 1:75,000; for coating plates 1:100 - 1:500
Expiration Date	12 months from date of receipt.



Detection of ECS (DYKDDDDK)-tagged prote...



Detection of ECS (DYKDDDDK) Tag by weste...



Detection of ECS (DYKDDDDK) Tag by weste...