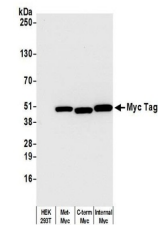


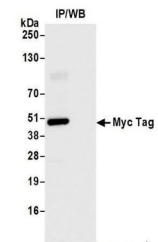
## Product Datasheet

### Myc Tag Antibody (orb1530834)

<b>Description</b>	Myc Tag Antibody
<b>Species/Host</b>	Rabbit
<b>Conjugation</b>	Unconjugated
<b>Tested Applications</b>	ELISA, ICC, IP, WB
<b>Immunogen</b>	Residues 410-419 (EQKLISEEDL) of human myc
<b>Target</b>	Myc Tag
<b>Preservatives</b>	Borate Buffered Saline (BBS) pH 8.2 with 0.1% rAlbumin and 0.09% Sodium Azide
<b>Form/Appearance</b>	Whole IgG
<b>Concentration</b>	250 µg/ml
<b>Storage</b>	2 - 8°C
<b>Note</b>	For research use only
<b>Application notes</b>	Format: Whole IgG
<b>Clonality</b>	Recombinant
<b>Dilution Range</b>	WB - 1:1000; IP - 20 µl/1 mg lysate; ICC - 1:100 to 1:500. Epitope retrieval with citrate buffer pH6.0 is recommended for FFPE cell sections.; ELISA - 1:1,000 - 1:50,000; for coating plates 1:100 - 1:500
<b>Expiration Date</b>	12 months from date of receipt.



Detection of Myc-tagged protein by WB fr...



Detection of Myc Tag by western blot of ...



Detection of Myc Tag in FFPE HEK293 cell...