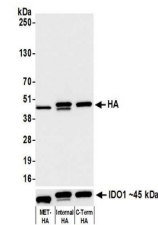


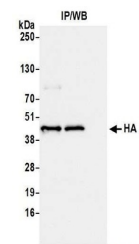
Product Datasheet

HA Tag Antibody (orb1530833)

Description	HA Tag Antibody
Species/Host	Rabbit
Conjugation	Unconjugated
Tested Applications	ELISA, ICC, IP, WB
Immunogen	HA Epitope tag (YPYDVPDYA)
Target	HA Tag
Preservatives	Borate Buffered Saline (BBS) pH 8.2 with 0.1% rAlbumin and 0.09% Sodium Azide
Form/Appearance	Whole IgG
Concentration	100 µg/ml
Storage	2 - 8°C
Note	For research use only
Application notes	Format: Whole IgG
Clonality	Recombinant
Dilution Range	WB - 1:1,000; IP - 20 µl/1 mg lysate; ICC - 1:100 to 1:500. Epitope retrieval with citrate buffer pH6.0 is recommended for FFPE cell sections.; ELISA - 1:1,000 - 1:30,000; for coating plates 1:100 - 1:500
Expiration Date	12 months from date of receipt.



Detection of HA-tagged protein by WB from...



Detection of HA Tag by western blot of i...



Detection of HA Tag in FFPE HEK293 cells...