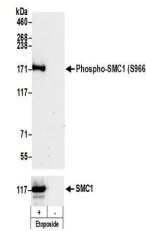


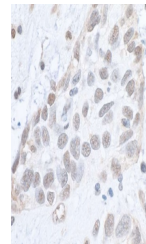
Product Datasheet

SMC1, Phospho (S966) Antibody (orb1530759)

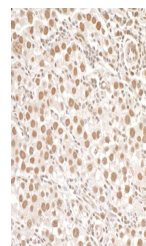
Description	SMC1, Phospho (S966) Antibody
Species/Host	Rabbit
Reactivity	Human
Conjugation	Unconjugated
Tested Applications	ICC, IHC, IP, WB
Immunogen	Surrounding serine 966
Target	SMC1, Phospho (S966)
Preservatives	Tris-citrate/phosphate buffer, pH 7 to 8 containing 0.09% Sodium Azide
Form/Appearance	Whole IgG
Concentration	1000 µg/ml
Storage	2 - 8°C
Note	For research use only
Application notes	Format: Whole IgG
Clonality	Polyclonal
Uniprot ID	Q14683
NCBI	NP_006297.2
Dilution Range	WB - 1:2,000 - 1:10,000; IP - 2 - 5 µg/mg lysate; IHC - 1:1,000 to 1:5,000. Epitope retrieval with citrate buffer pH6.0 is recommended for FFPE tissue sections.; ICC-IF - 1:500 - 1:5,000. Formaldehyde fixation is recommended. Permeabilization with Triton-X 100 is recommended for formaldehyde-fixed cells.
Expiration Date	12 months from date of receipt.



Detection of Phospho SMC1 (S966) by west...



Detection of human Phospho SMC1 (S966) b...



Detection of human Phospho SMC1 (S966) b...