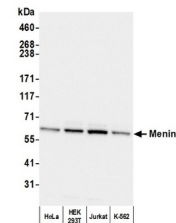


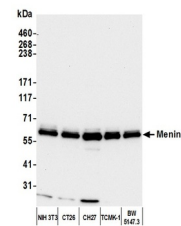
Product Datasheet

Menin Antibody (orb1530684)

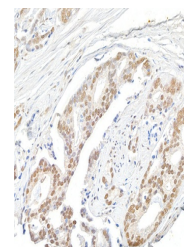
Description	Menin Antibody
Species/Host	Rabbit
Reactivity	Human, Mouse
Conjugation	Unconjugated
Tested Applications	IHC, IP, WB
Immunogen	Between 560 and C-terminus
Target	Menin
Preservatives	Tris-citrate/phosphate buffer, pH 7 to 8 containing 0.09% Sodium Azide
Form/Appearance	Whole IgG
Concentration	1000 µg/ml
Storage	2 - 8°C
Note	For research use only
Application notes	Format: Whole IgG
Clonality	Polyclonal
Uniprot ID	O00255
NCBI	NP_000235.2
Dilution Range	WB - 1:10,000 - 1:25,000; IP - 2 - 10 µg/mg lysate; IHC - 1:500 to 1:2,000. Epitope retrieval with citrate buffer pH6.0 is recommended for FFPE tissue sections.
Expiration Date	12 months from date of receipt.



Detection of human Menin by western blot...



Detection of mouse Menin by western blot...



Detection of human Menin by immunohistoc...