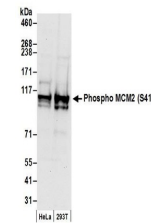


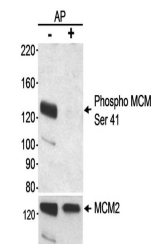
Product Datasheet

MCM2, Phospho (S41) Antibody (orb1530667)

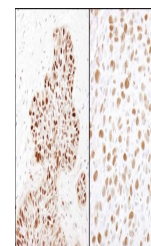
Description	MCM2, Phospho (S41) Antibody
Species/Host	Rabbit
Reactivity	Human, Mouse
Conjugation	Unconjugated
Tested Applications	IHC, WB
Immunogen	Surrounding serine 41
Target	MCM2, Phospho (S41)
Preservatives	Tris-citrate/phosphate buffer, pH 7 to 8 containing 0.09% Sodium Azide
Form/Appearance	Whole IgG
Concentration	1000 µg/ml
Storage	2 - 8°C
Note	For research use only
Application notes	Format: Whole IgG
Clonality	Polyclonal
Uniprot ID	P49736
NCBI	NP_004517.2
Dilution Range	WB - 1:5,000 - 1:20,000; IHC - 1:1,000 - 1:5,000. Epitope retrieval with citrate buffer pH 6.0 is recommended for FFPE tissue sections.
Expiration Date	12 months from date of receipt.



Detection of human Phospho MCM2 (S41) by...



Detection of human Phospho MCM2 (Ser41) ...



Detection of human and mouse MCM2 (Ser41)...