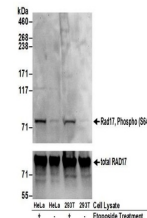


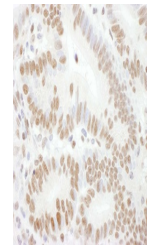
Product Datasheet

Rad17, Phospho (S645) Antibody (orb1530616)

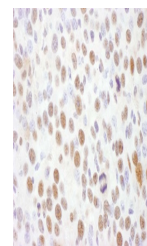
Description	Rad17, Phospho (S645) Antibody
Species/Host	Rabbit
Reactivity	Human, Mouse
Conjugation	Unconjugated
Tested Applications	IHC, WB
Immunogen	Surrounding serine 645
Target	Rad17, Phospho (S645)
Preservatives	Tris-citrate/phosphate buffer, pH 7 to 8 containing 0.09% Sodium Azide
Form/Appearance	Whole IgG
Concentration	1000 µg/ml
Storage	2 - 8°C
Note	For research use only
Application notes	Format: Whole IgG
Clonality	Polyclonal
Uniprot ID	O75943
NCBI	NP_002864.1
Dilution Range	WB - 1:1,000 - 1:5,000; IHC - 1:500 - 1:2,000. Epitope retrieval with citrate buffer pH 6.0 is recommended for FFPE tissue sections.
Expiration Date	12 months from date of receipt.



Detection of human Rad17, Phospho (S645)...



Detection of human Phospho Rad17 (S645) ...



Detection of mouse Phospho Rad17 (S645) ...