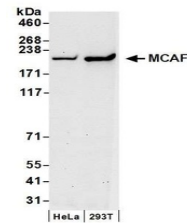


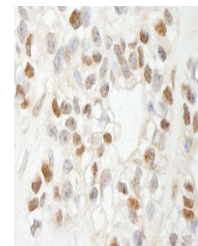
Product Datasheet

MCAF Antibody (orb1530596)

Description	MCAF Antibody
Species/Host	Rabbit
Reactivity	Human
Conjugation	Unconjugated
Tested Applications	IHC, WB
Immunogen	Between 25 and 75
Target	MCAF
Preservatives	Tris-citrate/phosphate buffer, pH 7 to 8 containing 0.09% Sodium Azide
Form/Appearance	Whole IgG
Concentration	1000 µg/ml
Storage	2 - 8°C
Note	For research use only
Application notes	Format: Whole IgG
Clonality	Polyclonal
Uniprot ID	Q6VMQ6
NCBI	AAQ92978.1
Dilution Range	WB - 1:5,000 - 1:20,000; IHC - 1:500 - 1:2,000. Epitope retrieval with citrate buffer pH 6.0 is recommended for FFPE tissue sections.
Expiration Date	12 months from date of receipt.



Detection of human MCAF by western blot....



Detection of human MCAF by immunohistoch...