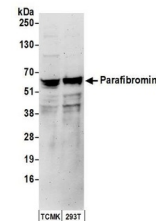


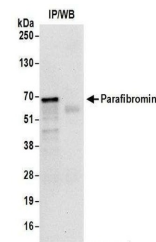
Product Datasheet

Parafibromin Antibody (orb1530595)

Description	Parafibromin Antibody
Species/Host	Rabbit
Reactivity	Human, Mouse
Conjugation	Unconjugated
Tested Applications	IP, WB
Immunogen	Between 250 and 300
Target	Parafibromin
Preservatives	Tris-citrate/phosphate buffer, pH 7 to 8 containing 0.09% Sodium Azide
Form/Appearance	Whole IgG
Concentration	1000 µg/ml
Storage	2 - 8°C
Note	For research use only
Application notes	Format: Whole IgG
Clonality	Polyclonal
Uniprot ID	Q6P1J9
NCBI	NP_078805.3
Dilution Range	WB - 1:5,000 - 1:20,000; IP - 1 - 4 µg/mg lysate
Expiration Date	12 months from date of receipt.



Detection of human and mouse Parafibromin...



Detection of human Parafibromin by western blot...