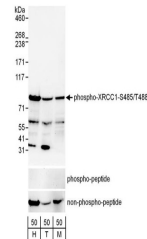


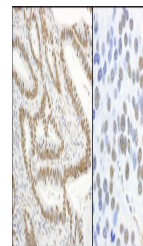
Product Datasheet

XRCC1, Phospho (S485/T488) Antibody (orb1530503)

| | |
|----------------------------|--|
| Description | XRCC1, Phospho (S485/T488) Antibody |
| Species/Host | Rabbit |
| Reactivity | Human, Mouse |
| Conjugation | Unconjugated |
| Tested Applications | IHC, WB |
| Immunogen | Surrounding serine 485 and threonine 488 |
| Target | XRCC1, Phospho (S485/T488) |
| Preservatives | Tris-citrate/phosphate buffer, pH 7 to 8 containing 0.09% Sodium Azide |
| Form/Appearance | Whole IgG |
| Concentration | 1000 µg/ml |
| Storage | 2 - 8°C |
| Note | For research use only |
| Application notes | Format: Whole IgG |
| Clonality | Polyclonal |
| Uniprot ID | P18887 |
| NCBI | NP_006288.2 |
| Dilution Range | WB - 1:1,000 - 1:5,000; IHC - 1:2,000 - 1:10,000. Epitope retrieval with citrate buffer pH 6.0 is recommended for FFPE tissue sections. |
| Expiration Date | 12 months from date of receipt. |



Detection of human and mouse Phospho-XRCC1...



Detection of human and mouse Phospho-XRCC1...