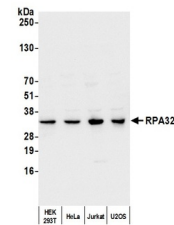


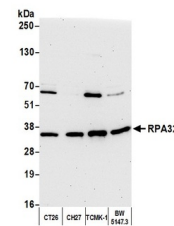
Product Datasheet

RPA32 Antibody (orb1530480)

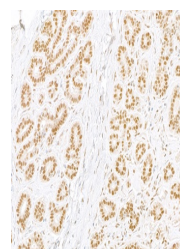
Description	RPA32 Antibody
Species/Host	Rabbit
Reactivity	Human, Mouse
Conjugation	Unconjugated
Tested Applications	FC, IHC, IP, WB
Immunogen	Between 220 and C-terminus
Target	RPA32
Preservatives	Tris-citrate/phosphate buffer, pH 7 to 8 containing 0.09% Sodium Azide
Form/Appearance	Whole IgG
Concentration	1000 µg/ml
Storage	2 - 8°C
Note	For research use only
Application notes	Format: Whole IgG
Clonality	Polyclonal
Uniprot ID	P15927
NCBI	NP_002937.1
Dilution Range	WB - 1:2,000 - 1:10,000; IP - 2 - 10 µg/mg lysate; IHC - 1:2,000 to 1:10,000. Epitope retrieval with Tris-EDTA pH9.0 is recommended for FFPE tissue sections.
Expiration Date	12 months from date of receipt.



Detection of human RPA32 by western blot...



Detection of mouse RPA32 by western blot...



Detection of human RPA32 by immunohistoc...