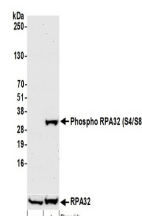


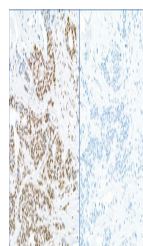
Product Datasheet

RPA32, Phospho (S4/S8) Antibody (orb1530479)

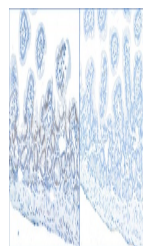
Description	RPA32, Phospho (S4/S8) Antibody
Species/Host	Rabbit
Reactivity	Human, Mouse
Conjugation	Unconjugated
Tested Applications	ICC, IHC, IP, WB
Immunogen	Surrounding serine 4/8
Target	RPA32, Phospho (S4/S8)
Preservatives	Tris-citrate/phosphate buffer, pH 7 to 8 containing 0.09% Sodium Azide
Form/Appearance	Whole IgG
Concentration	1000 µg/ml
Storage	2 - 8°C
Note	For research use only
Application notes	Format: Whole IgG
Clonality	Polyclonal
Uniprot ID	P15927
NCBI	NP_002937.1
Dilution Range	WB - 1:2,000 - 1:10,000; IP - 2 - 10 µg/mg lysate; IHC - 1:500 to 1:2,000. Epitope retrieval with citrate buffer pH6.0 is recommended for FFPE tissue sections.; ICC-IF - 1:500 - 1:5,000
Expiration Date	12 months from date of receipt.



Detection of human Phospho RPA32 (S4/S8)...



Detection of human Phospho RPA32 (S4/S8)...



Detection of mouse Phospho RPA32 (S4/S8)...