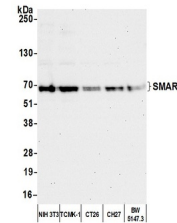


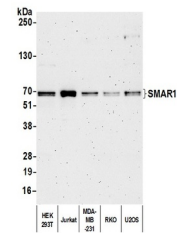
Product Datasheet

SMAR1/BANP Antibody (orb1530428)

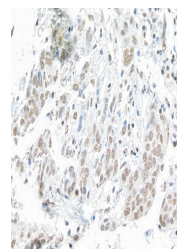
Description	SMAR1/BANP Antibody
Species/Host	Rabbit
Reactivity	Human, Mouse
Conjugation	Unconjugated
Tested Applications	IHC, IP, WB
Immunogen	Between 469 and C-terminus
Target	SMAR1/BANP
Preservatives	Tris-citrate/phosphate buffer, pH 7 to 8 containing 0.09% Sodium Azide
Form/Appearance	Whole IgG
Concentration	1000 µg/ml
Storage	2 - 8°C
Note	For research use only
Application notes	Format: Whole IgG
Clonality	Polyclonal
Uniprot ID	Q8N9N5
NCBI	Q96GJ7
Dilution Range	WB - 1:10,000 - 1:25,000; IP - 1:500 - 1:2,500; IHC - 1:2,000 - 1:10,000. Epitope retrieval with citrate buffer pH 6.0 is recommended for FFPE tissue sections.
Expiration Date	12 months from date of receipt.



Detection of mouse SMAR1 by western blot...



Detection of human SMAR1 by western blot...



Detection of human SMAR1 by immunohistoc...