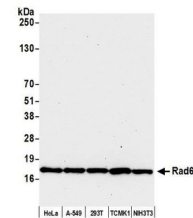


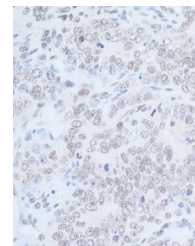
Product Datasheet

Rad6 Antibody (orb1530423)

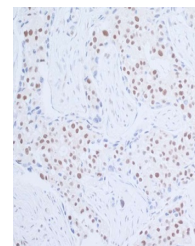
Description	Rad6 Antibody
Species/Host	Rabbit
Reactivity	Human, Mouse
Conjugation	Unconjugated
Tested Applications	IHC, WB
Immunogen	Between 1 and 50
Target	Rad6
Preservatives	Tris-citrate/phosphate buffer, pH 7 to 8 containing 0.09% Sodium Azide
Form/Appearance	Whole IgG
Concentration	1000 µg/ml
Storage	2 - 8°C
Note	For research use only
Application notes	Format: Whole IgG
Clonality	Polyclonal
Uniprot ID	P49459
NCBI	NP_003327.2
Dilution Range	WB - 1:10,000 - 1:25,000; IHC - 1:500 - 1:2,000. Epitope retrieval with citrate buffer pH6.0 is recommended for FFPE tissue sections.
Expiration Date	12 months from date of receipt.



Detection of human and mouse Rad6 by wes...



Detection of mouse Rad6 by immunohistoch...



Detection of human Rad6 by immunohistoch...