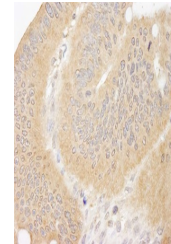


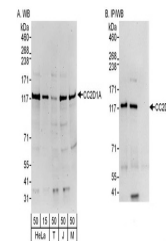
Product Datasheet

CC2D1A Antibody (orb1530416)

Description	CC2D1A Antibody
Species/Host	Rabbit
Reactivity	Human, Mouse
Conjugation	Unconjugated
Tested Applications	ICC, IHC, IP, WB
Immunogen	Between 1 and 50
Target	CC2D1A
Preservatives	Tris-citrate/phosphate buffer, pH 7 to 8 containing 0.09% Sodium Azide
Form/Appearance	Whole IgG
Concentration	1000 µg/ml
Storage	2 - 8°C
Note	For research use only
Application notes	Format: Whole IgG
Clonality	Polyclonal
Uniprot ID	Q6P1N0
NCBI	NP_060191.3
Dilution Range	WB - 1:1,000 - 1:10,000; IP - 3 - 10 µg/mg lysate; IHC - 1:500 - 1:2,000. Epitope retrieval with Tris-EDTA pH 9.0 is recommended for FFPE tissue sections.; ICC - 1:100
Expiration Date	12 months from date of receipt.



Detection of human CC2D1A by immunohisto...



Detection of human and mouse CC2D1A by W...