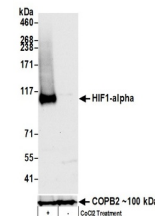


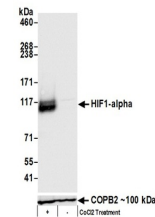
Product Datasheet

HIF1-alpha Antibody (orb1530413)

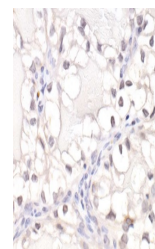
Description	HIF1-alpha Antibody
Species/Host	Rabbit
Reactivity	Human, Mouse
Conjugation	Unconjugated
Tested Applications	ICC, IHC, IP, WB
Immunogen	Between 776 and C-terminus
Target	HIF1-alpha
Preservatives	Tris-buffered Saline containing 0.1% rAlbumin and 0.09% Sodium Azide
Form/Appearance	Whole IgG
Concentration	200 µg/ml
Storage	2 - 8°C
Note	For research use only
Application notes	Format: Whole IgG
Clonality	Polyclonal
Uniprot ID	Q16665
NCBI	NP_001521.1
Dilution Range	WB - 1:2,000 - 1:10,000; IP - 2 - 10 µg/mg lysate; IHC - 1:100 to 1:500. Epitope retrieval with citrate buffer pH6.0 for 20 minutes using a pressure cooker is recommended for FFPE tissue sections.; ICC-IF - 1:100 - 1:500. Epitope retrieval with citrate buffer pH 6.0 for 20 minutes using a pressure cooker is recommended for FFPE tissue sections.
Expiration Date	12 months from date of receipt.



Detection of human HIF1 alpha by western...



Detection of mouse HIF1 alpha by western...



Detection of human HIF1-alpha by immunoh...