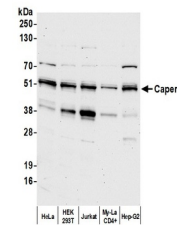


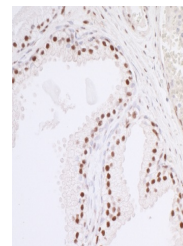
Product Datasheet

Caper Antibody (orb1530405)

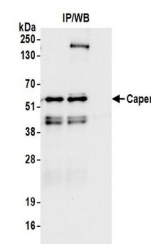
Description	Caper Antibody
Species/Host	Rabbit
Reactivity	Human
Conjugation	Unconjugated
Tested Applications	IHC, IP, WB
Immunogen	Between 325 and 375
Target	Caper
Preservatives	Phosphate Buffered Saline (PBS) containing 0.09% Sodium Azide
Form/Appearance	Whole IgG
Concentration	1000 µg/ml
Storage	2 - 8°C
Note	For research use only
Application notes	Format: Whole IgG
Clonality	Polyclonal
Uniprot ID	Q14498
NCBI	NP_909122.1
Dilution Range	WB - 1:2,000 - 1:10,000; IP - 2 - 10 µg/mg lysate; IHC - 1:200 to 1:1,000. Epitope retrieval with citrate buffer pH6.0 is recommended for FFPE tissue sections.
Expiration Date	12 months from date of receipt.



Detection of human Caper by western blot...



Detection of human Caper by immunohistoc...



Detection of human Caper by western blot...