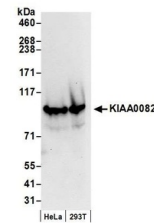


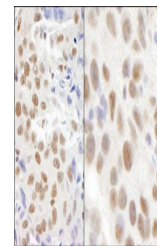
Product Datasheet

KIAA0082 Antibody (orb1530383)

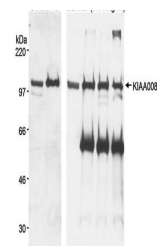
Description	KIAA0082 Antibody
Species/Host	Rabbit
Reactivity	Human, Mouse
Conjugation	Unconjugated
Tested Applications	IHC, IP, WB
Immunogen	Between 125 and 175
Target	KIAA0082
Preservatives	Tris-citrate/phosphate buffer, pH 7 to 8 containing 0.09% Sodium Azide
Form/Appearance	Whole IgG
Concentration	1000 µg/ml
Storage	2 - 8°C
Note	For research use only
Application notes	Format: Whole IgG
Clonality	Polyclonal
Uniprot ID	Q8N1G2
NCBI	NP_055865.1
Dilution Range	WB - 1:5,000 - 1:25,000; IP - 1 - 5 µg/mg lysate; IHC - 1:500 - 1:2,000. Epitope retrieval with Tris-EDTA pH 9.0 is recommended for FFPE tissue sections.
Expiration Date	12 months from date of receipt.



Detection of human KIAA0082 by western b...



Detection of human and mouse KIAA0082 by...



Detection of human KIAA0082 by WB and IP...