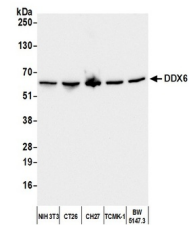


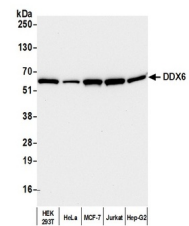
Product Datasheet

DDX6 Antibody (orb1530167)

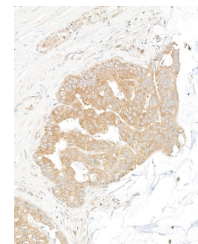
| | |
|----------------------------|---|
| Description | DDX6 Antibody |
| Species/Host | Rabbit |
| Reactivity | Human, Mouse |
| Conjugation | Unconjugated |
| Tested Applications | IHC, IP, WB |
| Immunogen | Between 1 and 50 |
| Target | DDX6 |
| Preservatives | Tris-buffered Saline containing 0.1% rAlbumin and 0.09% Sodium Azide |
| Form/Appearance | Whole IgG |
| Concentration | 200 µg/ml |
| Storage | 2 - 8°C |
| Note | For research use only |
| Application notes | Format: Whole IgG |
| Clonality | Polyclonal |
| Uniprot ID | P26196 |
| NCBI | NP_004388.2 |
| Dilution Range | WB - 1:5,000 - 1:15,000; IP - 2 - 5 µg/mg lysate; IHC - 1:100 - 1:500. Epitope retrieval with Tris-EDTA pH 9.0 is recommended for FFPE tissue sections. |
| Expiration Date | 12 months from date of receipt. |



Detection of mouse DDX6 by western blot....



Detection of human DDX6 by western blot....



Detection of human DDX6 by immunohistochem...