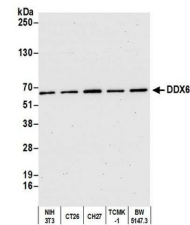


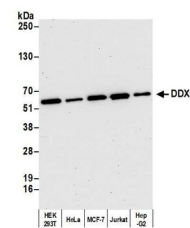
Product Datasheet

DDX6 Antibody (orb1530164)

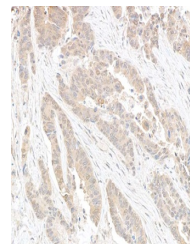
Description	DDX6 Antibody
Species/Host	Rabbit
Reactivity	Human, Mouse
Conjugation	Unconjugated
Tested Applications	IHC, IP, WB
Immunogen	Between 433 and C-terminus
Target	DDX6
Preservatives	Tris-citrate/phosphate buffer, pH 7 to 8 containing 0.09% Sodium Azide
Form/Appearance	Whole IgG
Concentration	1000 µg/ml
Storage	2 - 8°C
Note	For research use only
Application notes	Format: Whole IgG
Clonality	Polyclonal
Uniprot ID	P26196
NCBI	NP_004388.2
Dilution Range	WB - 1:25,000 - 1:50,000; IP - 2 - 10 µg/mg lysate; IHC - 1:1,000 to 1:5,000. Epitope retrieval with Tris-EDTA pH9.0 is recommended for FFPE tissue sections.
Expiration Date	12 months from date of receipt.



Detection of mouse DDX6 by western blot....



Detection of human DDX6 by western blot....



Detection of human DDX6 by immunohistoch....