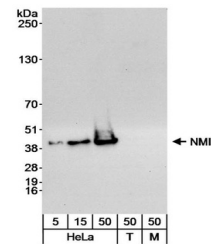


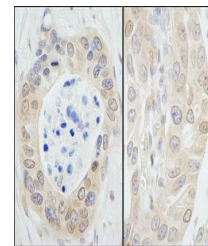
Product Datasheet

NMI Antibody (orb1530008)

Description	NMI Antibody
Species/Host	Rabbit
Reactivity	Human
Conjugation	Unconjugated
Tested Applications	IHC, WB
Immunogen	Between 257 and C-terminus
Target	NMI
Preservatives	Tris-buffered Saline containing 0.1% rAlbumin and 0.09% Sodium Azide
Form/Appearance	Whole IgG
Concentration	200 µg/ml
Storage	2 - 8°C
Note	For research use only
Application notes	Format: Whole IgG
Clonality	Polyclonal
Uniprot ID	Q13287
NCBI	NP_004679.1
Dilution Range	WB - 1:2,000 - 1:10,000; IP - Not recommended. Use rabbit anti-NMI antibody A300-550A.; IHC - 1:500 - 1:2,000. Epitope retrieval with citrate buffer pH 6.0 is recommended for FFPE tissue sections.
Expiration Date	12 months from date of receipt.



Detection of human NMI by western blot.S...



Detection of human NMI by immunohistoche...