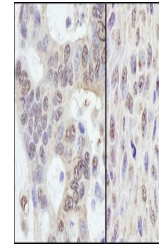


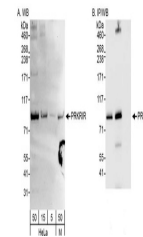
## Product Datasheet

### PRKRIR Antibody (orb1529952)

<b>Description</b>	PRKRIR Antibody
<b>Species/Host</b>	Rabbit
<b>Reactivity</b>	Human, Mouse
<b>Conjugation</b>	Unconjugated
<b>Tested Applications</b>	IHC, IP, WB
<b>Immunogen</b>	Between 175 and 225
<b>Target</b>	PRKRIR
<b>Preservatives</b>	Tris-buffered Saline containing 0.1% rAlbumin and 0.09% Sodium Azide
<b>Form/Appearance</b>	Whole IgG
<b>Concentration</b>	200 µg/ml
<b>Storage</b>	2 - 8°C
<b>Note</b>	For research use only
<b>Application notes</b>	Format: Whole IgG
<b>Clonality</b>	Polyclonal
<b>Uniprot ID</b>	<a href="#">O43422</a>
<b>NCBI</b>	<a href="#">NP_004696.2</a>
<b>Dilution Range</b>	WB - 1:2,000 - 1:10,000; IP - 1 - 4 µg/mg lysate; IHC - 1:100 - 1:1,000. Epitope retrieval with citrate buffer pH 6.0 is recommended for FFPE tissue sections.
<b>Expiration Date</b>	12 months from date of receipt.



Detection of human and mouse PRKRIR by i...



Detection of PRKRIR by WB and IP. Samples...