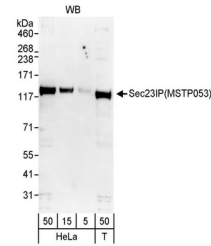


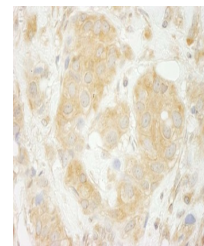
Product Datasheet

Sec23IP/MSTP053 Antibody (orb1529938)

Description	Sec23IP/MSTP053 Antibody
Species/Host	Rabbit
Reactivity	Human
Conjugation	Unconjugated
Tested Applications	IHC, WB
Immunogen	Between 325 and 375
Target	Sec23IP/MSTP053
Preservatives	Tris-buffered Saline containing 0.1% rAlbumin and 0.09% Sodium Azide
Form/Appearance	Whole IgG
Concentration	200 µg/ml
Storage	2 - 8°C
Note	For research use only
Application notes	Format: Whole IgG
Clonality	Polyclonal
Uniprot ID	Q9Y6Y8
NCBI	NP_009121.1
Dilution Range	WB - 1:2,500 - 1:10,000; IP - Not recommended. Use rabbit anti-Sec23IP/MSTP053 antibody A300-592A or A300-592A.; IHC - 1:100 - 1:500. Epitope retrieval with Tris-EDTA pH 9.0 is recommended for FFPE tissue sections.
Expiration Date	12 months from date of receipt.



Detection of human Sec23IP(MSTP053) by w...



Detection of human Sec23IP(MSTP053) by i...