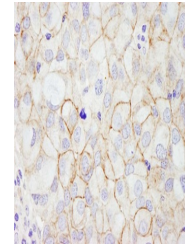


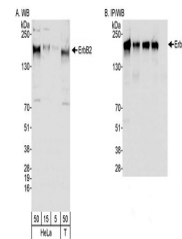
Product Datasheet

ErbB2 Antibody (orb1529894)

Description	ErbB2 Antibody
Species/Host	Rabbit
Reactivity	Human
Conjugation	Unconjugated
Tested Applications	IHC, IP, WB
Immunogen	Between 975 and 1025
Target	ErbB2
Preservatives	Tris-buffered Saline containing 0.1% rAlbumin and 0.09% Sodium Azide
Form/Appearance	Whole IgG
Concentration	200 µg/ml
Storage	2 - 8°C
Note	For research use only
Application notes	Format: Whole IgG
Clonality	Polyclonal
Uniprot ID	P04626
NCBI	NP_004439.2
Dilution Range	WB - 1:2,000 - 1:10,000; IP - 1 - 4 µg/mg lysate; IHC - 1:100 - 1:500. Epitope retrieval with Tris-EDTA pH 9.0 is recommended for FFPE tissue sections.
Expiration Date	12 months from date of receipt.



Detection of human ErbB2 by immunohistoc...



Detection of human ErbB2 by WB and IP.Sa...