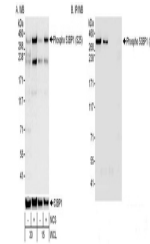


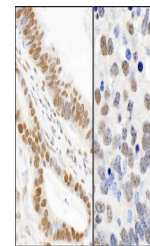
Product Datasheet

53BP1, Phospho (S25) Antibody (orb1529849)

Description	53BP1, Phospho (S25) Antibody
Species/Host	Rabbit
Reactivity	Human, Mouse
Conjugation	Unconjugated
Tested Applications	IHC, IP, WB
Immunogen	Surrounding serine 25
Target	53BP1, Phospho (S25)
Preservatives	Tris-buffered Saline containing 0.1% rAlbumin and 0.09% Sodium Azide
Form/Appearance	Whole IgG
Concentration	200 µg/ml
Storage	2 - 8°C
Note	For research use only
Application notes	Format: Whole IgG
Clonality	Polyclonal
Uniprot ID	Q12888
NCBI	NP_005648.1
Dilution Range	WB - 1:2,000 - 1:10,000; IP - 1 - 4 µg/mg lysate; IHC - 1:1,000 - 1:5,000. Epitope retrieval with citrate buffer pH 6.0 is recommended for FFPE tissue sections.
Expiration Date	12 months from date of receipt.



Detection of Phospho 53BP1 (S25) by west...



Detection of human and mouse Phospho 53B...