
Product Datasheet

RNA Polymerase II, Phospho (S2) Antibody (orb1529845)

Description

RNA Polymerase II, Phospho (S2) Antibody

Species/Host

Rabbit

Reactivity

Human, Mouse

Conjugation

Unconjugated

Tested Applications

IHC, IP, WB

Immunogen

Surrounding serine 2

Target

RNA Polymerase II, Phospho (S2)

Preservatives

Tris-buffered Saline containing 0.1% rAlbumin and 0.09% Sodium Azide

Form/Appearance

Whole IgG

Concentration

200 µg/ml

Storage

2 - 8°C

Note

For research use only

Application notes

Format: Whole IgG

Clonality

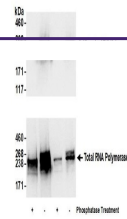
Polyclonal

Uniprot ID
[P24928](#)
NCBI
[NP_000928.1](#)
Dilution Range

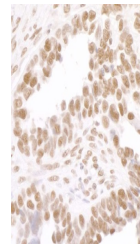
WB - 1:2,000 - 1:10,000; IP - 2 - 10 µg/mg lysate; IHC - 1:200 - 1:1,000. Epitope retrieval with citrate buffer pH 6.0 is recommended for FFPE tissue sections.

Expiration Date

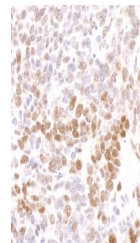
12 months from date of receipt.



Detection of human Phospho RNA Polymeras...



Detection of human Phospho RNA Polymeras...



Detection of mouse Phospho RNA Polymeras...