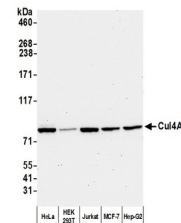


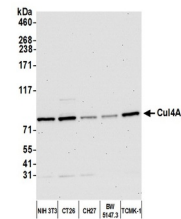
Product Datasheet

Cul4a Antibody (orb1529710)

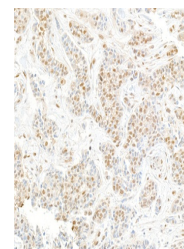
Description	Cul4a Antibody
Species/Host	Rabbit
Reactivity	Human, Mouse
Conjugation	Unconjugated
Tested Applications	IHC, IP, WB
Immunogen	Between 709 and C-terminus
Target	Cul4a
Preservatives	Tris-citrate/phosphate buffer, pH 7 to 8 containing 0.09% Sodium Azide
Form/Appearance	Whole IgG
Concentration	1000 µg/ml
Storage	2 - 8°C
Note	For research use only
Application notes	Format: Whole IgG
Clonality	Polyclonal
Uniprot ID	Q13619
NCBI	NP_001008895.1
Dilution Range	WB - 1:10,000 - 1:25,000; IP - 2 - 5 µg/mg lysate; IHC - 1:1,000 to 1:5,000. Epitope retrieval with citrate buffer pH6.0 is recommended for FFPE tissue sections.
Expiration Date	12 months from date of receipt.



Detection of human Cul4A by western blot...



Detection of mouse Cul4A by western blot...



Detection of human Cul4a by immunohistoc...