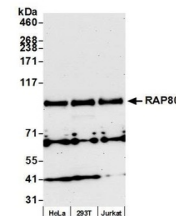


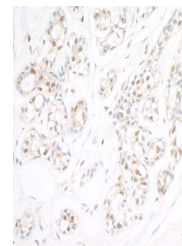
Product Datasheet

RAP80 Antibody (orb1529681)

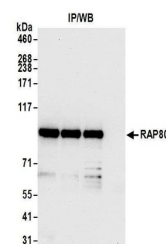
Description	RAP80 Antibody
Species/Host	Rabbit
Reactivity	Human
Conjugation	Unconjugated
Tested Applications	IHC, IP, WB
Immunogen	Between 669 and C-terminus
Target	RAP80
Preservatives	Tris-citrate/phosphate buffer, pH 7 to 8 containing 0.09% Sodium Azide
Form/Appearance	Whole IgG
Concentration	1000 µg/ml
Storage	2 - 8°C
Note	For research use only
Application notes	Format: Whole IgG
Clonality	Polyclonal
Uniprot ID	Q96RL1
NCBI	NP_057374.3
Dilution Range	WB - 1:10,000 - 1:25,000; IP - 2 -10 µg/mg lysate; IHC - 1:1,000 to 1:5,000. Epitope retrieval with Tris-EDTA pH9.0 is recommended for FFPE tissue sections.
Expiration Date	12 months from date of receipt.



Detection of human RAP80 by western blot...



Detection of human RAP80 by immunohistoc...



Detection of human RAP80 by western blot...