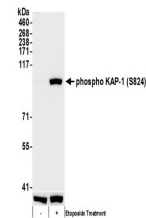


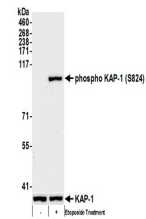
Product Datasheet

KAP-1, Phospho (S824) Antibody (orb1529674)

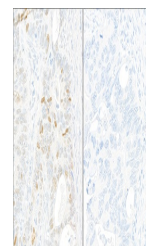
Description	KAP-1, Phospho (S824) Antibody
Species/Host	Rabbit
Reactivity	Human, Mouse
Conjugation	Unconjugated
Tested Applications	ICC, IHC, IP, WB
Immunogen	Surrounding serine 824
Target	KAP-1, Phospho (S824)
Preservatives	Tris-buffered Saline containing 0.1% rAlbumin and 0.09% Sodium Azide
Form/Appearance	Whole IgG
Concentration	200 µg/ml
Storage	2 - 8°C
Note	For research use only
Application notes	Format: Whole IgG
Clonality	Polyclonal
Uniprot ID	Q13263
NCBI	NP_005753.1
Dilution Range	WB - 1:2,000 - 1:10,000; IP - 2 - 10 µg/mg lysate; IHC - 1:500 to 1:2,000. Epitope retrieval with citrate buffer pH6.0 is recommended for FFPE tissue sections.; ICC - 1:200 - 1:1,000; ICC-IF - 1:200 - 1:1,000
Expiration Date	12 months from date of receipt.



Detection of human phospho KAP-1 (S824) ...



Detection of mouse phospho KAP-1 (S824) ...



Detection of human Phospho KAP-1 (S824) ...