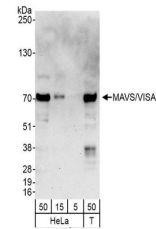


Product Datasheet

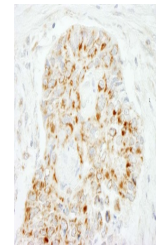
MAVS/VISA Antibody (orb1529646)

Description	MAVS/VISA Antibody
Species/Host	Rabbit
Reactivity	Human
Conjugation	Unconjugated
Tested Applications	ICC, IHC, IP, WB
Immunogen	Between 150 and 200
Target	MAVS/VISA
Preservatives	Tris-buffered Saline containing 0.1% rAlbumin and 0.09% Sodium Azide
Form/Appearance	Whole IgG
Concentration	200 µg/ml
Storage	2 - 8°C
Note	For research use only
Application notes	Format: Whole IgG
Clonality	Polyclonal
Uniprot ID	Q7Z434
NCBI	AAH44952.1
Dilution Range	WB - 1:2,000 - 1:10,000; IP - 2 - 5 µg/mg lysate; IHC - 1:100 - 1:500. Epitope retrieval with Tris-EDTA pH 9.0 is recommended for FFPE tissue sections.; ICC - 1:100 - 1:500. Epitope retrieval with Tris-EDTA pH 9.0 is recommended for FFPE cell sections.
Expiration Date	12 months from date of receipt.

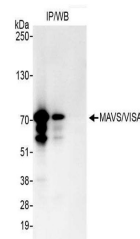


Detection of human MAVS/VISA by western

...



Detection of human MAVS/VISA by immunohi...



Detection of human MAVS/VISA by western

...