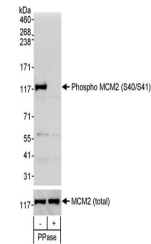


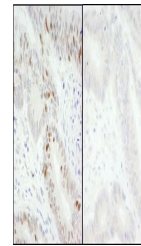
Product Datasheet

MCM2, Phospho (S40/S41) Antibody (orb1529636)

Description	MCM2, Phospho (S40/S41) Antibody
Species/Host	Rabbit
Reactivity	Human
Conjugation	Unconjugated
Tested Applications	FC, IHC, WB
Immunogen	Surrounding serine 40/41
Target	MCM2, Phospho (S40/S41)
Preservatives	Tris-buffered Saline containing 0.1% rAlbumin and 0.09% Sodium Azide
Form/Appearance	Whole IgG
Concentration	200 µg/ml
Storage	2 - 8°C
Note	For research use only
Application notes	Format: Whole IgG
Clonality	Polyclonal
Uniprot ID	P49736
NCBI	NP_004517.2
Dilution Range	WB - 1:1,000 - 1:5,000; IHC - 1:100 - 1:500. Epitope retrieval with citrate buffer pH 6.0 is recommended for FFPE tissue sections.
Expiration Date	12 months from date of receipt.



Detection of
human
Phospho
MCM2
(S40/S41...)



Detection of
human
Phospho
MCM2
(S40/S41...)