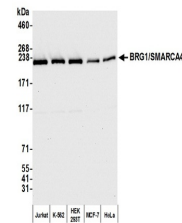


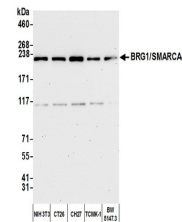
Product Datasheet

BRG1/SMARCA4 Antibody (orb1529587)

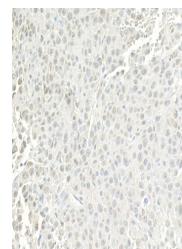
| | |
|----------------------------|---|
| Description | BRG1/SMARCA4 Antibody |
| Species/Host | Rabbit |
| Reactivity | Human, Mouse |
| Conjugation | Unconjugated |
| Tested Applications | IHC, IP, WB |
| Immunogen | Between 75 and 125 |
| Target | BRG1/SMARCA4 |
| Preservatives | Tris-buffered Saline containing 0.1% rAlbumin and 0.09% Sodium Azide |
| Form/Appearance | Whole IgG |
| Concentration | 200 µg/ml |
| Storage | 2 - 8°C |
| Note | For research use only |
| Application notes | Format: Whole IgG |
| Clonality | Polyclonal |
| Uniprot ID | P51532 |
| NCBI | NP_003063.2 |
| Dilution Range | WB - 1:2,000 - 1:10,000; IP - 2 - 10 µg/mg lysate; IHC - 1:500 to 1:2,000. Epitope retrieval with citrate buffer pH6.0 is recommended for FFPE tissue sections. |
| Expiration Date | 12 months from date of receipt. |



Detection of human BRG1/SMARCA4 by weste...



Detection of mouse BRG1/SMARCA4 by weste...



Detection of mouse BRG1/SMARCA4 by immun...