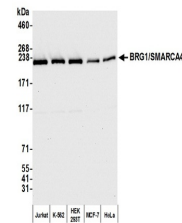


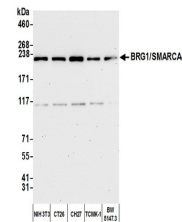
Product Datasheet

BRG1/SMARCA4 Antibody (orb1529586)

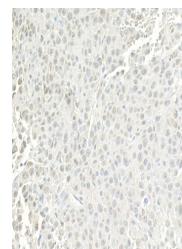
Description	BRG1/SMARCA4 Antibody
Species/Host	Rabbit
Reactivity	Human, Mouse
Conjugation	Unconjugated
Tested Applications	IHC, IP, WB
Immunogen	Between 75 and 125
Target	BRG1/SMARCA4
Preservatives	Tris-buffered Saline containing 0.1% rAlbumin and 0.09% Sodium Azide
Form/Appearance	Whole IgG
Concentration	200 µg/ml
Storage	2 - 8°C
Note	For research use only
Application notes	Format: Whole IgG
Clonality	Polyclonal
Uniprot ID	P51532
NCBI	NP_003063.2
Dilution Range	WB - 1:2,000 - 1:10,000; IP - 2 - 10 µg/mg lysate; IHC - 1:500 to 1:2,000. Epitope retrieval with citrate buffer pH6.0 is recommended for FFPE tissue sections.
Expiration Date	12 months from date of receipt.



Detection of human BRG1/SMARCA4 by weste...



Detection of mouse BRG1/SMARCA4 by weste...



Detection of mouse BRG1/SMARCA4 by immun...