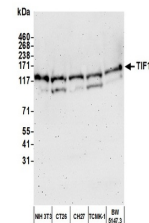


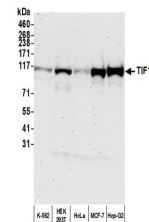
Product Datasheet

TIF1 Alpha/TRIM24 Antibody (orb1529582)

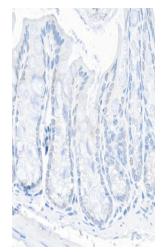
Description	TIF1 Alpha/TRIM24 Antibody
Species/Host	Rabbit
Reactivity	Human, Mouse
Conjugation	Unconjugated
Tested Applications	ChIP, IHC, IP, WB
Immunogen	Between 700 and 750
Target	TIF1 Alpha/TRIM24
Preservatives	Tris-buffered Saline containing 0.1% rAlbumin and 0.09% Sodium Azide
Form/Appearance	Whole IgG
Concentration	200 µg/ml
Storage	2 - 8°C
Note	For research use only
Application notes	Format: Whole IgG
Clonality	Polyclonal
Uniprot ID	O15164
NCBI	NP_056989.2
Dilution Range	WB - 1:2,000 - 1:10,000; IP - 2 - 10 µg/mg lysate; IHC - 1:200 - 1:1000. Epitope retrieval with citrate buffer pH6.0 is recommended for FFPE tissue sections.
Expiration Date	12 months from date of receipt.



Detection of mouse TIF1A by western blot...



Detection of human TIF1A by western blot...



Detection of mouse TIF1 alpha/TRIM24 by ...