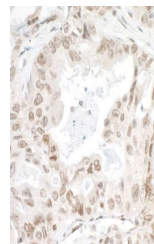


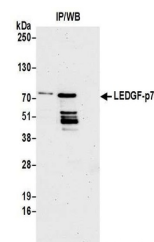
Product Datasheet

LEDGF/p75 Antibody (orb1529522)

Description	LEDGF/p75 Antibody
Species/Host	Rabbit
Reactivity	Human, Mouse
Conjugation	Unconjugated
Tested Applications	IHC, IP
Immunogen	Between 225 and 275
Target	LEDGF/p75
Preservatives	Tris-citrate/phosphate buffer, pH 7 to 8 containing 0.09% Sodium Azide
Form/Appearance	Whole IgG
Concentration	1000 µg/ml
Storage	2 - 8°C
Note	For research use only
Application notes	Format: Whole IgG
Clonality	Polyclonal
Uniprot ID	O75475
NCBI	NP_150091.2
Dilution Range	WB - Not recommended. Use rabbit anti-LEDGF antibody A300-848A.; IP - 2 - 5 µg/mg lysate; IHC - 1:2,000 to 1:10,000. Epitope retrieval with Tris-EDTA pH9.0 is recommended for FFPE tissue sections.
Expiration Date	12 months from date of receipt.



Detection of human LEDGF/p75 by immunohi...



Detection of human LEDGF/p75 by western ...