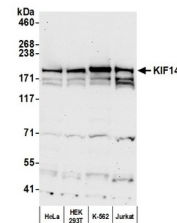


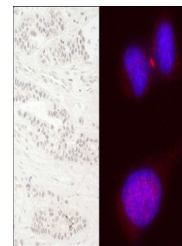
Product Datasheet

KIF14 Antibody (orb1529402)

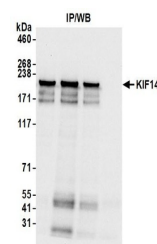
Description	KIF14 Antibody
Species/Host	Rabbit
Reactivity	Human
Conjugation	Unconjugated
Tested Applications	ICC, IHC, IP, WB
Immunogen	Between 1598 and C-terminus
Target	KIF14
Preservatives	Tris-buffered Saline containing 0.1% rAlbumin and 0.09% Sodium Azide
Form/Appearance	Whole IgG
Concentration	200 µg/ml
Storage	2 - 8°C
Note	For research use only
Application notes	Format: Whole IgG
Clonality	Polyclonal
Uniprot ID	Q15058
NCBI	NP_055690.1
Dilution Range	WB - 1:2,000 - 1:10,000; IP - 2 - 10 µg/mg lysate; IHC - 1:40 to 1:200. Epitope retrieval with citrate buffer pH6.0 is recommended for FFPE tissue sections.; ICC-IF - 1:200 - 1:1,000. Formaldehyde fixation is recommended. Permeabilization with Triton-X 100 is recommended for formaldehyde-fixed cells.
Expiration Date	12 months from date of receipt.



Detection of human KIF14 by western blot...



Detection of human KIF14 by immunohistoc...



Detection of human KIF14 by western blot...