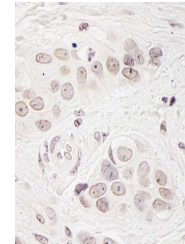


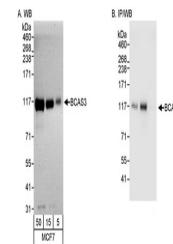
Product Datasheet

BCAS3 Antibody (orb1529396)

Description	BCAS3 Antibody
Species/Host	Rabbit
Reactivity	Human
Conjugation	Unconjugated
Tested Applications	IHC, IP, WB
Immunogen	Between 878 and C-terminus
Target	BCAS3
Preservatives	Tris-buffered Saline containing 0.1% rAlbumin and 0.09% Sodium Azide
Form/Appearance	Whole IgG
Concentration	200 µg/ml
Storage	2 - 8°C
Note	For research use only
Application notes	Format: Whole IgG
Clonality	Polyclonal
Uniprot ID	Q9H6U6
NCBI	BAB15156.1
Dilution Range	WB - 1:2,000 - 1:10,000; IP - 2 - 5 µg/mg lysate; IHC - 1:100 - 1:500. Epitope retrieval with citrate buffer pH 6.0 or Tris-EDTA pH 9.0 is recommended for FFPE tissue sections.
Expiration Date	12 months from date of receipt.



Detection of human BCAS3 by immunohistoc...



Detection of human BCAS3 by WB and IP.Sa...