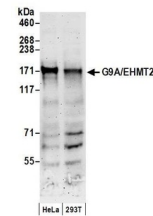


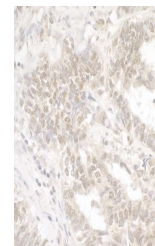
## Product Datasheet

### G9A/EHMT2 Antibody (orb1529363)

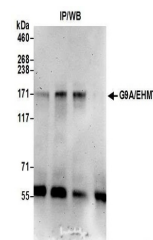
|                            |  |
|----------------------------|--|
| <b>Description</b>         | G9A/EHMT2 Antibody   |
| <b>Species/Host</b>        | Rabbit   |
| <b>Reactivity</b>          | Human  |
| <b>Conjugation</b>         | Unconjugated   |
| <b>Tested Applications</b> | IHC, IP, WB  |
| <b>Immunogen</b>           | Between 1160 and C-terminus  |
| <b>Target</b>              | G9A/EHMT2  |
| <b>Preservatives</b>       | Tris-citrate/phosphate buffer, pH 7 to 8 containing 0.09% Sodium Azide   |
| <b>Form/Appearance</b>     | Whole IgG  |
| <b>Concentration</b>       | 1000 µg/ml   |
| <b>Storage</b>             | 2 - 8°C  |
| <b>Note</b>                | For research use only  |
| <b>Application notes</b>   | Format: Whole IgG  |
| <b>Clonality</b>           | Polyclonal   |
| <b>Uniprot ID</b>          | <a href="#">Q96KQ7</a>   |
| <b>NCBI</b>                | <a href="#">NP_006700.2</a>  |
| <b>Dilution Range</b>      | WB - 1:2,000 - 1:10,000; IP - 2 - 10 µg/mg lysate; IHC - 1:1,000 - 1:5,000. Epitope retrieval with Tris-EDTA pH 9.0 is recommended for FFPE tissue sections. |
| <b>Expiration Date</b>     | 12 months from date of receipt.  |



Detection of human G9A/EHMT2 by western ...



Detection of human G9A/EHMT2 by immunohi...



Detection of human G9A/EHMT2 by western ...