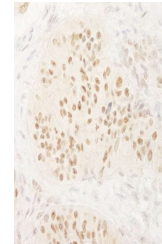


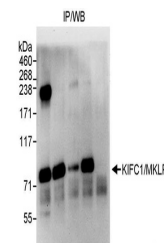
Product Datasheet

KIFC1 Antibody (orb1529335)

Description	KIFC1 Antibody
Species/Host	Rabbit
Reactivity	Human
Conjugation	Unconjugated
Tested Applications	IHC, IP
Immunogen	Between 623 and C-terminus
Target	KIFC1
Preservatives	Tris-citrate/phosphate buffer, pH 7 to 8 containing 0.09% Sodium Azide
Form/Appearance	Whole IgG
Concentration	1000 µg/ml
Storage	2 - 8°C
Note	For research use only
Application notes	Format: Whole IgG
Clonality	Polyclonal
Uniprot ID	Q9BW19
NCBI	NP_002254.1
Dilution Range	WB - Not recommended. Use rabbit anti-KIFC1 antibody A300-951A.; IP - 2 - 5 µg/mg lysate; IHC - 1:1,000 - 1:5,000. Epitope retrieval with Tris-EDTA pH 9.0 is recommended for FFPE tissue sections.
Expiration Date	12 months from date of receipt.



Detection of human KIFC1/MKLP2 by immuno...



Detection of human KIFC1/MKLP2 by wester...