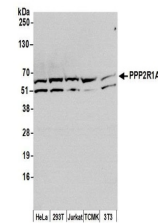


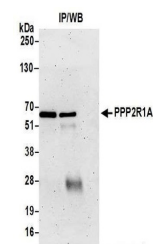
Product Datasheet

PPP2R1A Antibody (orb1529313)

Description	PPP2R1A Antibody
Species/Host	Rabbit
Reactivity	Human, Mouse
Conjugation	Unconjugated
Tested Applications	IP, WB
Immunogen	Between 539 and C-terminus
Target	PPP2R1A
Preservatives	Tris-buffered Saline containing 0.1% rAlbumin and 0.09% Sodium Azide
Form/Appearance	Whole IgG
Concentration	200 µg/ml
Storage	2 - 8°C
Note	For research use only
Application notes	Format: Whole IgG
Clonality	Polyclonal
Uniprot ID	P30153
NCBI	NP_055040.2
Dilution Range	WB - 1:2,000 - 1:10,000; IP - 2 - 5 µg/mg lysate
Expiration Date	12 months from date of receipt.



Detection of human and mouse PPP2R1A by ...



Detection of human PPP2R1A by western bl...