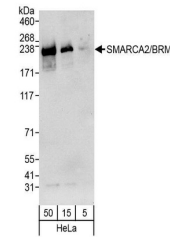


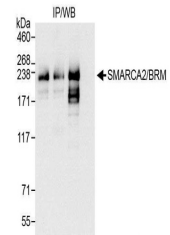
Product Datasheet

SMARCA2/BRM Antibody (orb1529217)

Description	SMARCA2/BRM Antibody
Species/Host	Rabbit
Reactivity	Human
Conjugation	Unconjugated
Tested Applications	IP, WB
Immunogen	Between 1325 and 1375
Target	SMARCA2/BRM
Preservatives	Tris-buffered Saline containing 0.1% rAlbumin and 0.09% Sodium Azide
Form/Appearance	Whole IgG
Concentration	200 µg/ml
Storage	2 - 8°C
Note	For research use only
Application notes	Format: Whole IgG
Clonality	Polyclonal
Uniprot ID	P51531
NCBI	CAA51407.1
Dilution Range	WB - 1:2,000 - 1:10,000; IP - 2 - 5 µg/mg lysate
Expiration Date	12 months from date of receipt.



Detection of human SMARCA2/BRM by wester...



Detection of human SMARCA2/BRM by wester...