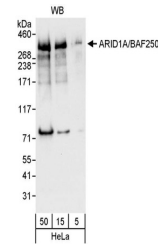


Product Datasheet

ARID1A/BAF250 Antibody (orb1529163)

Description	ARID1A/BAF250 Antibody
Species/Host	Rabbit
Reactivity	Human
Conjugation	Unconjugated
Tested Applications	WB
Immunogen	Between 675 and 725
Target	ARID1A/BAF250
Preservatives	Tris-buffered Saline containing 0.1% rAlbumin and 0.09% Sodium Azide
Form/Appearance	Whole IgG
Concentration	200 µg/ml
Storage	2 - 8°C
Note	For research use only
Application notes	Format: Whole IgG
Clonality	Polyclonal
Uniprot ID	O14497
NCBI	NP_006006.3
Dilution Range	WB - 1:2,000 - 1:10,000; IP - Not recommended
Expiration Date	12 months from date of receipt.



Detection of human ARID1A by western blo...