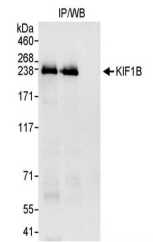


Product Datasheet

KIF1B Antibody (orb1529127)

Description	KIF1B Antibody
Species/Host	Rabbit
Reactivity	Human
Conjugation	Unconjugated
Tested Applications	IP
Immunogen	Between 1766 and C-terminus
Target	KIF1B
Preservatives	Tris-citrate/phosphate buffer, pH 7 to 8 containing 0.09% Sodium Azide
Form/Appearance	Whole IgG
Concentration	1000 µg/ml
Storage	2 - 8°C
Note	For research use only
Application notes	Format: Whole IgG
Clonality	Polyclonal
Uniprot ID	O60333
NCBI	CAC16629.1
Dilution Range	WB - Not recommended. Use rabbit anti-KIF1B antibody A301-055A.; IP - 2 - 5 µg/mg lysate
Expiration Date	12 months from date of receipt.



Detection of human KIF1B by western blot...