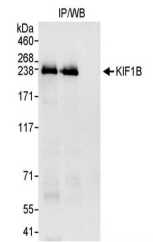


Product Datasheet

KIF1B Antibody (orb1529126)

| | |
|----------------------------|--|
| Description | KIF1B Antibody |
| Species/Host | Rabbit |
| Reactivity | Human |
| Conjugation | Unconjugated |
| Tested Applications | IP |
| Immunogen | Between 1766 and C-terminus |
| Target | KIF1B |
| Preservatives | Tris-citrate/phosphate buffer, pH 7 to 8 containing 0.09% Sodium Azide |
| Form/Appearance | Whole IgG |
| Concentration | 1000 µg/ml |
| Storage | 2 - 8°C |
| Note | For research use only |
| Application notes | Format: Whole IgG |
| Clonality | Polyclonal |
| Uniprot ID | O60333 |
| NCBI | CAC16629.1 |
| Dilution Range | WB - Not recommended. Use rabbit anti-KIF1B antibody A301-055A.; IP - 2 - 5 µg/mg lysate |
| Expiration Date | 12 months from date of receipt. |



Detection of human KIF1B by western blot...