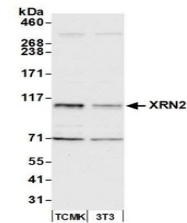


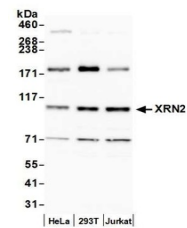
Product Datasheet

XRN2 Antibody (orb1529020)

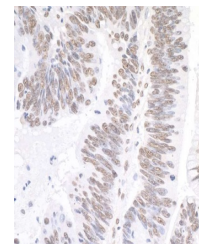
Description	XRN2 Antibody
Species/Host	Rabbit
Reactivity	Human, Mouse
Conjugation	Unconjugated
Tested Applications	IHC, IP, WB
Immunogen	Between 900 and C-terminus
Target	XRN2
Preservatives	Tris-buffered Saline containing 0.1% rAlbumin and 0.09% Sodium Azide
Form/Appearance	Whole IgG
Concentration	200 µg/ml
Storage	2 - 8°C
Note	For research use only
Application notes	Format: Whole IgG
Clonality	Polyclonal
Uniprot ID	Q9H0D6
NCBI	NP_036387.2
Dilution Range	WB - 1:10,000 - 1:25,000; IP - 2 - 5 µg/mg lysate; IHC - 1:500 to 1:2,000. Epitope retrieval with citrate buffer pH6.0 is recommended for FFPE tissue sections.
Expiration Date	12 months from date of receipt.



Detection of mouse XRN2 by western blot....



Detection of human XRN2 by western blot....



Detection of human XRN2 by immunohistochem...