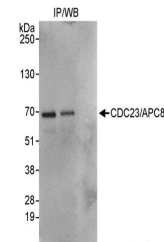


Product Datasheet

CDC23/APC8 Antibody (orb1528875)

Description	CDC23/APC8 Antibody
Species/Host	Rabbit
Reactivity	Human
Conjugation	Unconjugated
Tested Applications	IP
Immunogen	Between 275 and 325
Target	CDC23/APC8
Preservatives	Tris-citrate/phosphate buffer, pH 7 to 8 containing 0.09% Sodium Azide
Form/Appearance	Whole IgG
Concentration	1000 µg/ml
Storage	2 - 8°C
Note	For research use only
Application notes	Format: Whole IgG
Clonality	Polyclonal
Uniprot ID	Q9UJX2
NCBI	NP_004652.2
Dilution Range	WB - Not recommended. Use rabbit anti-CDC23/APC8 antibody A301-181A.; IP - 2 - 5 µg/mg lysate
Expiration Date	12 months from date of receipt.



Detection of human CDC23/APC8 by western...